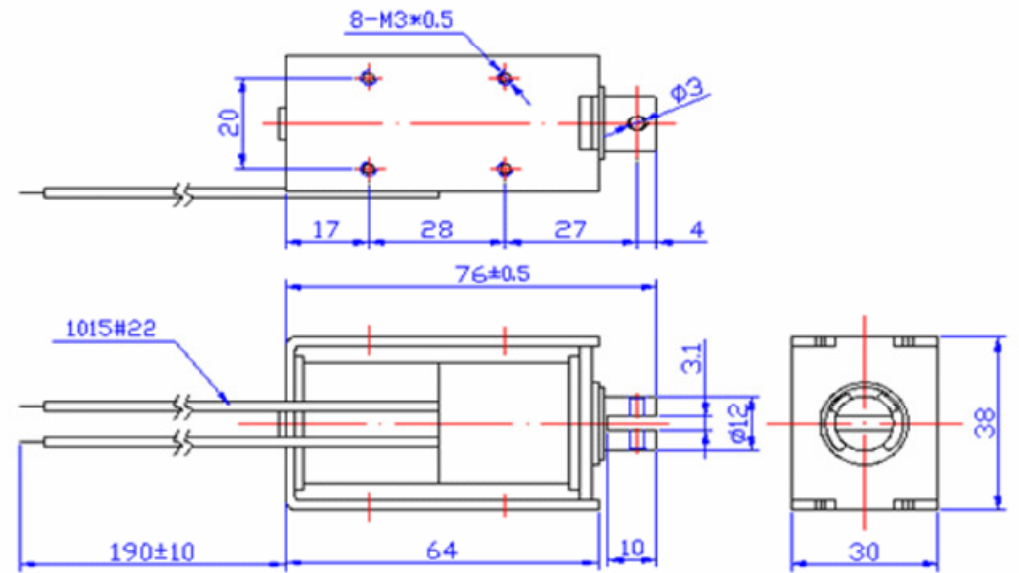
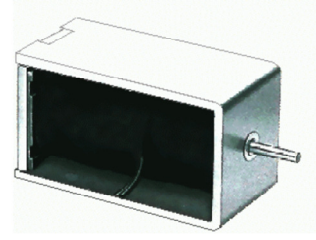


REVISIONS			
REV	DESCRIPTION	DATE	APPROVED



Illustrative Photo



SPECIFICATION

Power at 100% Duty	8W	Rate Voltage	24V DC
Max ON Time at 50%	Continuous	Rated Current	0.33A
Power at 50% Duty	16W	Force of Attraction	260gf@10mm, 24V
Max ON Time at 50%	140 Seconds	Holding Force	1600gf, 24V
Power at 20% Duty	32W	Coil Resistance	72ohm (+- 10%)
Max ON Time at 20%	50 Seconds	Operating Temperature	-20C to +40C
Power at 10% Duty	80W	Insulation Resistance	50Mohm min.
Max ON Time at 10%	9 Seconds	Dielectric Strength	AC1200V @ 1 sec
Weight (g)	278		

	FS-1264S-24 Open Frame Solenoid (Push Type)		
	iNOVA Microsystems Pte Ltd #06-30, NorthStar @ AMK 7030 Ang Mo Kio Ave Singapore 569880 Email: sales@inovamicro.com Tel: (65)65703826 Fax: (65)62344235		
DRAWN	Sunny	SIZE	FSCM NO
Dec 2013		A4	
		SCALE	DWG NO
			SHEET 1 OF 1

